

Mobile Food Units

Rules for MFU Operation in City Parks

- I. PURPOSE.** The purpose of these rules is to administer the Mobile Food Unit ordinance adopted by the City Council on February 16, 2016 and included in the City Code at Chapter 16, Article XIV, at City of Knoxville for parks and recreation centers in accordance with Section [SECTION] of the City Code.
- II. POLICY.** It will be the policy of the City through its Parks and Recreation Department to allow MFUs to vend in certain City parks and recreation centers in accordance with City Code, Chapter 16, as applicable, and in accordance with these rules.
- III. REQUIREMENTS.** All MFUs shall comply with City Code, Chapter 16, Article XIV to the extent applicable, including, but not limited to, obtaining a Mobile Food Unit Permit and complying with all applicable federal and state laws and regulations. Mobile Food Units (MFUs) shall be allowed in parking lots of certain City of Knoxville public parks and recreation centers with the following limitations.
 - 1. Approved Parks and Maximum Numbers.** MFUs may operate at approved parks and recreation centers. Approved parks and recreation centers are listed in Appendix 1 to these Rules. The maximum number of MFUs allowed to operate at one time at an approved park or recreation center is found in Appendix; however, the Parks and Recreation Department may increase or decrease the allowable number in the Department's discretion. The Parks and Recreation Department may also allow MFUs to operate in other City parks for one-time, special events, such as the grand opening of a new greenway or park.
 - 2. Reservations Required.** MFUs are allowed to operate in the approved parks and recreation centers only by reserving a space through the Parks and Recreation Department. If a concessionaire is scheduled to operate at the park or recreation center, the MFU will not be allowed to reserve a space at the park or recreation center. At any one time, MFU Vendors may have only two (2) reservations at all approved parks or recreation centers. When a Vendor makes a reservation, the Parks and Recreation Department will place cones in the designated MFU area on the day of the reservation in order to reserve the space for the MFU. While the MFU is operating, the Vendor shall use these cones provided by the Parks and Recreation Department and place one cone at each corner of the MFU.
 - 3. Hours of Operation.** MFUs are limited to vending in parks or recreation centers only when the facility is open, and MFUs may not operate or vend for longer than four (4) continuous hours, unless the Parks and Recreation Department grants written permission otherwise.

4. **Designated Areas.** MFUs shall operate only within the designated area at approved parks and recreation centers. MFUs and Vendors are prohibited from using a push cart or circulating throughout the premises of parks or recreation centers in any manner. MFUs shall not provide or allow any dining area, including but not limited to tables, chairs, booths, bar stools, benches, tents, and standup counters.
5. **Removal of Equipment.** MFUs and all associated equipment must be removed from the park at the end of each day. The Unit and any equipment are not permitted in the park overnight at any time.
6. **Noise.** MFUs are prohibited from using sound amplification. MFUs and Vendors shall comply with the City Code with respect noise when vending. Any required measurement for compliance with such regulations shall be taken from the edge of the parking lot within which the MFU is parked.
7. **Waste Collection.** MFUs shall provide a trash receptacle for the collection of waste material. Trash collected or generated by MFUs shall not be placed or disposed of in park or community center trash receptacles. Vendors shall remove all trash and litter from park grounds within fifty (50) feet of their MFU.
8. **Electrical Service.** Any power required for MFUs shall be self-contained and MFUs shall not use utilities drawn from the park or recreation center unless specifically authorized in writing by the Parks and Recreation Department.

IV. RIGHTS RESERVED. Notwithstanding the authorizations made herein:

1. The City reserves the right to prohibit a MFU from vending at City parks and recreation centers based on public health, safety, and welfare concerns.
2. The City reserves the right to prohibit MFUs from vending at City parks and recreation centers if a special event, permitted sport/league activities, or other permitted activities are taking place at such park. If the MFU is affiliated with or solicited by an event host, the Vendor shall obtain express written consent from the event host demonstrating that the MFU has permission to vend at a special event, permitted sport/league activity, or other permitted park or recreation center activity.

Appendix 1 to MFU Rules for Operation in City Parks
Approved Parks and Maps of Designated Locations

MFUs that comply with the Rules for Operation in City Parks may operate in the following City of Knoxville parks and recreation or community centers at the locations designated herein.

Parks

Adair Park
1807 Adair Drive
Knoxville, TN 37918

Gary Underwood Park
6135 Moore Road
Knoxville, TN 37920

Holston River Park
3300 Holston Hills Road
Knoxville, TN 37914

Lakeshore Park
6410 S. Northshore Drive
Knoxville, TN 37919

Morningside Park
1600 Dandridge Avenue
Knoxville, TN 37915

Sam Duff Memorial Park
4060 Chapman Highway
Knoxville, TN 37920

Sequoyah Park
1400 Cherokee Blvd.
Knoxville, TN 37919

Sharp's Ridge Memorial Park
329 Sharp's Ridge Memorial Drive
Knoxville, TN 37917

Tyson Park
2351 Kingston Pike
Knoxville, TN 37919

West Hills Park
410 N. Winston Road
Knoxville, TN 37909

Recreation and Community Centers

Cal Johnson
507 Hall of Fame Drive
Knoxville, TN 37917

Milton Roberts
5900 Asheville Highway
Knoxville, TN 37924

Cecil B. Webb
923 Baker Ave.
Knoxville, TN 37920

Deane Hill
7400 Deane Hill Drive
Knoxville, TN 37919

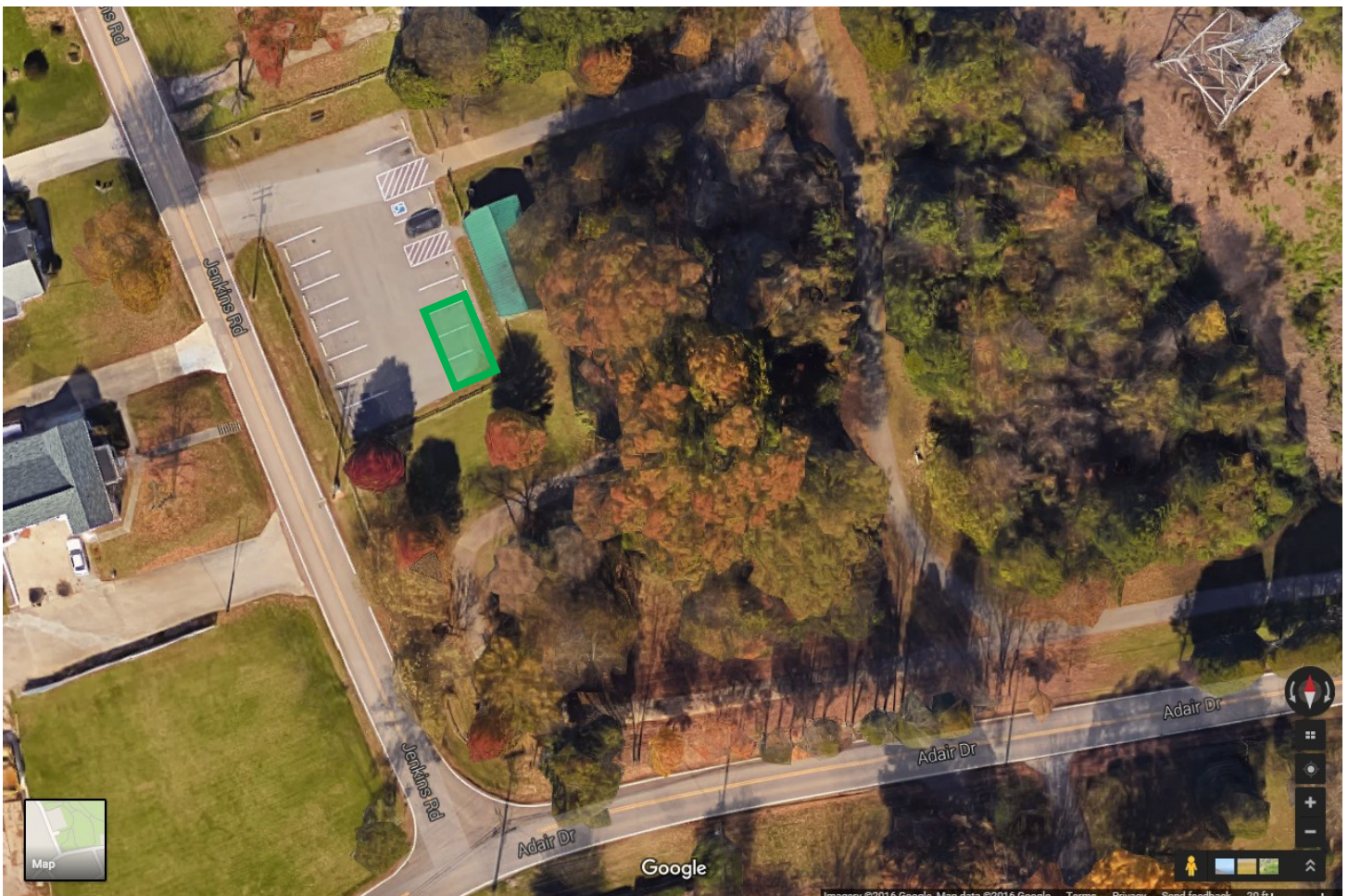
South Knoxville
522 Old Maryville Pike
Knoxville, TN 37920



Adair Park
1807 Adair Drive
Knoxville, TN 37918

Maximum Number of MFUs: 1

Designated Area: The three southeast parking spaces in the parking lot situated on Jenkins Rd.



Gary Underwood
6135 Moore Road
Knoxville, TN 37920

Maximum Number of MFUs: 2

Designated Area: The four most northwesterly parking spaces in middle parking bays



Holston River Park
3300 Holston Hills Road
Knoxville, TN 37914

Maximum Number of MFUs: 1

Designated Area: In the east parking lot, the three most southwesterly parking spaces in middle parking bay on the south side



Lakeshore Park
6410 S. Northshore Drive
Knoxville, TN 37919

Appendix 1
Maps of Designated Locations in City Parks
For the Operation of Mobile Food Units
Page 5 of 16



Maximum Number of MFUs: 2

Designated Area: The four most northern parking spaces in middle parking bay



Morningside Park
1600 Dandridge Avenue
Knoxville, TN 37915

Maximum Number of MFUs: 2

Designated Area: The two most western parallel parking spaces



Sam Duff Memorial Park
4060 Chapman Highway
Knoxville, TN 37920

Maximum Number of MFUs: 1

Designated Area: The four most northern parking spaces in the middle parking bay



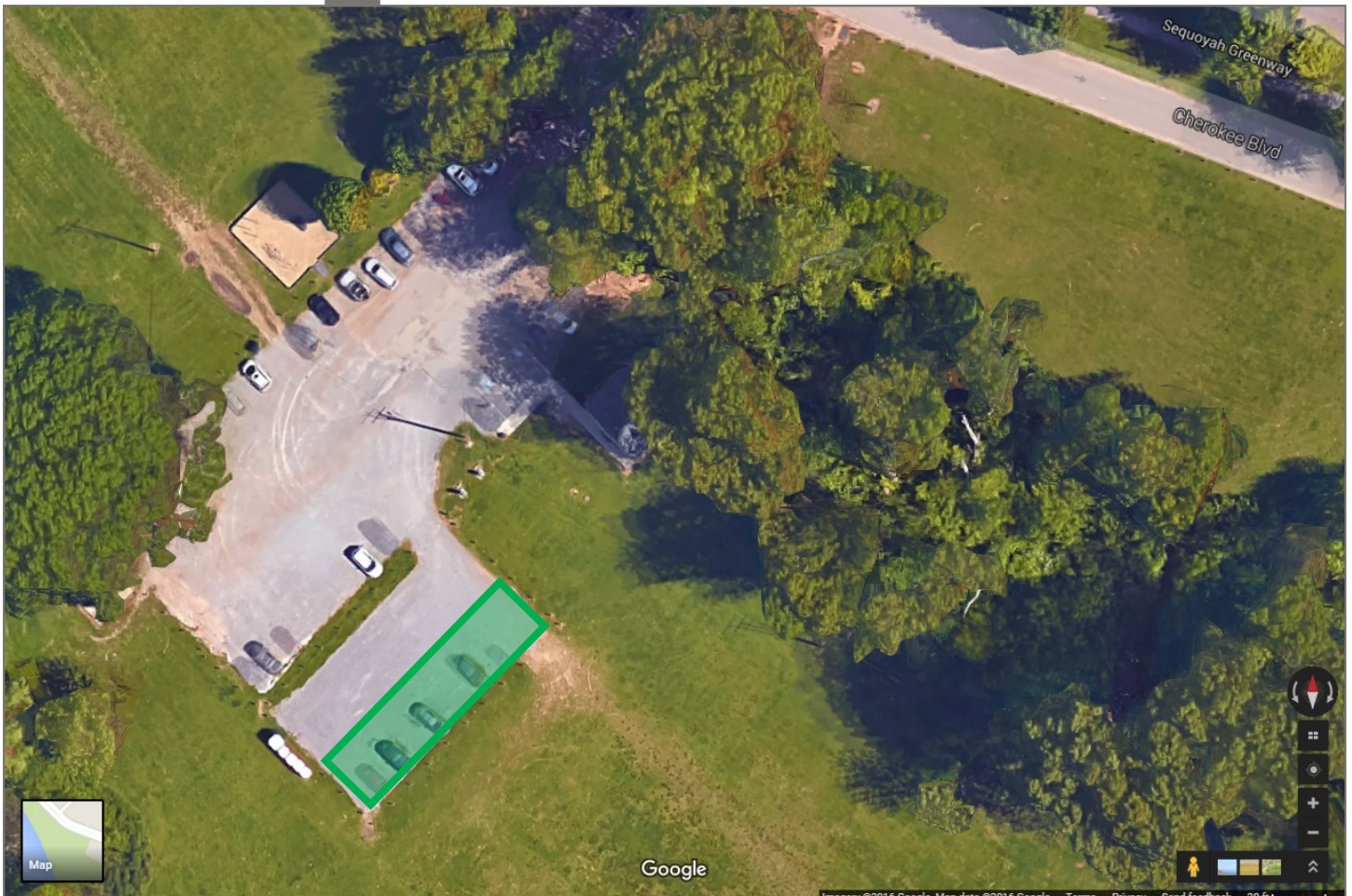
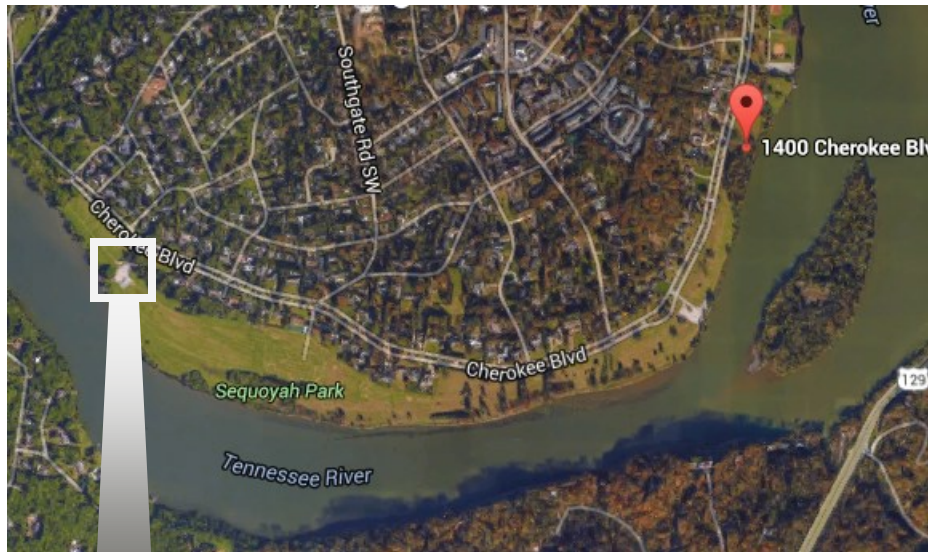
**Sequoyah Park
1400 Cherokee Blvd.
Knoxville, TN 37919**

Appendix 1
Maps of Designated Locations in City Parks
For the Operation of Mobile Food Units
Page 8 of 16



Maximum Number of MFUs: 2

Designated Area: The southeastern portion of the smaller parking lot



Sharp's Ridge Memorial Park
329 Sharp's Ridge Memorial Drive
Knoxville, TN 37917

Appendix 1
Maps of Designated Locations in City Parks
For the Operation of Mobile Food Units
Page 9 of 16



Maximum Number of MFUs: 2

Designated Area: The north side of the cul-de-sac at the end of the park



Tyson Park
2351 Kingston Pike
Knoxville, TN 37919

Appendix 1
Maps of Designated Locations in City Parks
For the Operation of Mobile Food Units
Page 10 of 16



Maximum Number of MFUs: 2

Designated Area: The parking spaces across the street from the skate park and prior to the Alcoa Highway underpass



West Hills Park
410 N. Winston Road
Knoxville, TN 37909

Maximum Number of MFUs: 2

Designated Area: The six most eastern parking spaces in the parking bay second from the north



**Cal Johnson Recreation Center
507 Hall of Fame Drive
Knoxville, TN 37917**

Maximum Number of MFUs: 2

Designated Area: The six most southeasterly parking spaces in the south parking lot



**Milton Roberts Recreation Center
5900 Asheville Highway
Knoxville, TN 37924**

Maximum Number of MFUs: 1

Designated Area: Two parking spaces in southwest corner of the parking lot adjacent to the rec center



Cecil B. Webb Recreation Center
923 Baker Ave.
Knoxville, TN 37920

Maximum Number of MFUs: 2

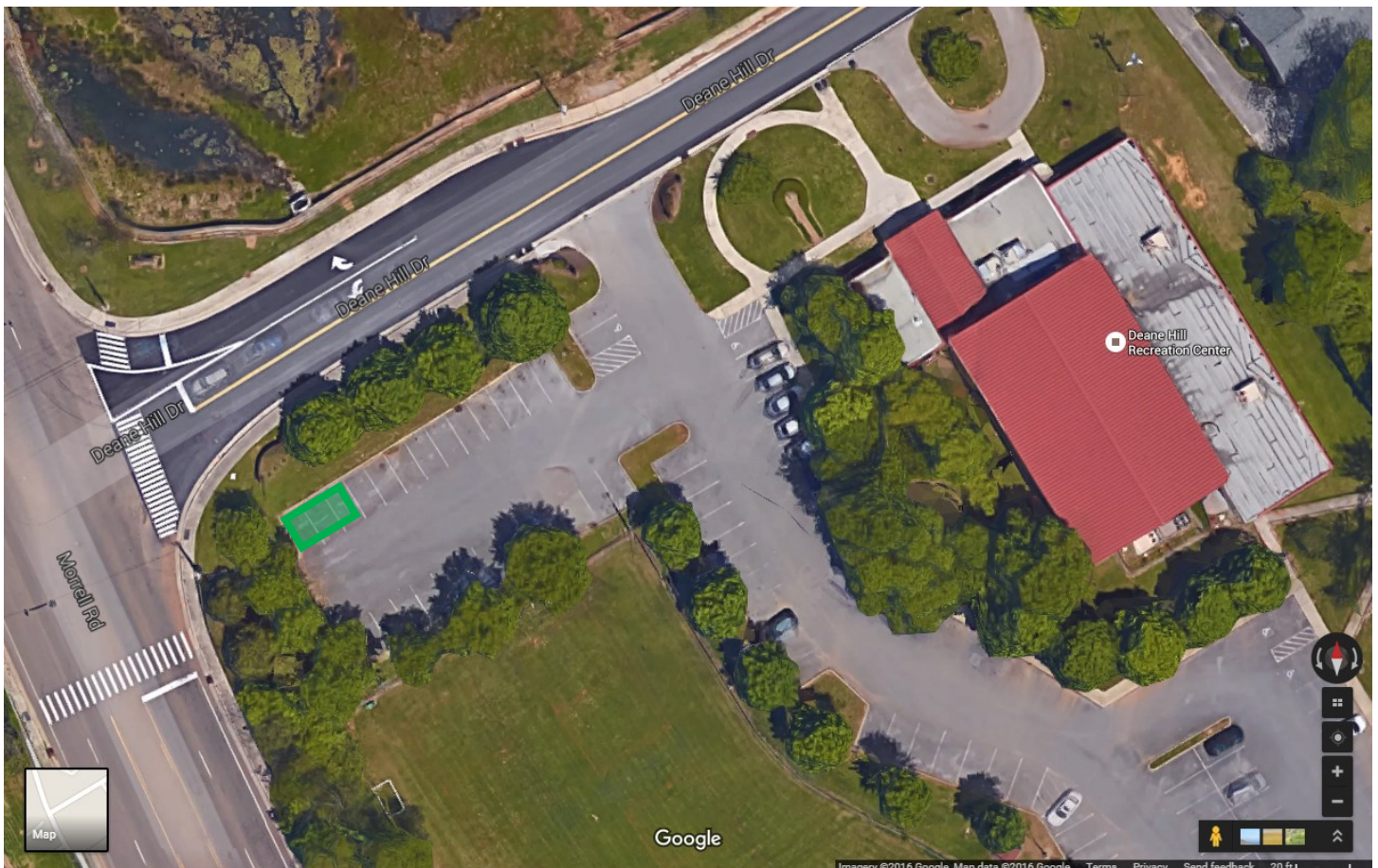
Designated Area: Approximately six of the most northwestern parking spaces in the larger parking lot



**Deane Hill Recreation Center
7400 Deane Hill Drive
Knoxville, TN 37919**

Maximum Number of MFUs: 1

Designated Area: The three most northwestern parking spaces in the front parking lot



**South Knoxville Community Center
522 Old Maryville Pike
Knoxville, TN 37920**

Maximum Number of MFUs: 2

Designated Area: The six most northeastern parking spaces in the parking lot on the northeast side of the community center

