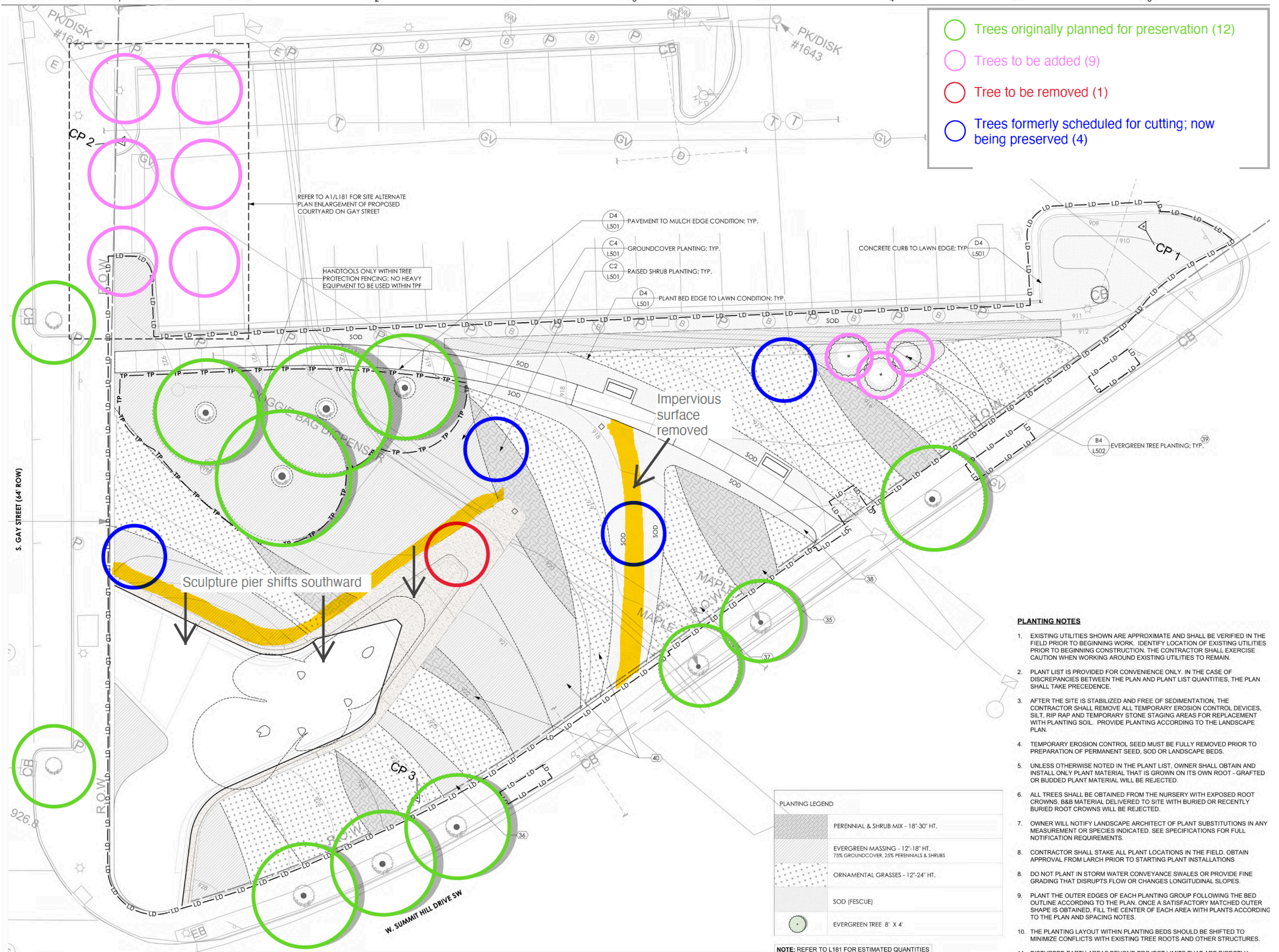


- Trees originally planned for preservation (12)
- Trees to be added (9)
- Tree to be removed (1)
- Trees formerly scheduled for cutting; now being preserved (4)



REFER TO A1/L181 FOR SITE ALTERNATE PLAN ENLARGEMENT OF PROPOSED COURTYARD ON GAY STREET

HANDTOOLS ONLY WITHIN TREE PROTECTION FENCING; NO HEAVY EQUIPMENT TO BE USED WITHIN TPF

D4 L501 PAVEMENT TO MULCH EDGE CONDITION; TYP.

C4 L501 GROUND COVER PLANTING; TYP.

C2 L501 RAISED SHRUB PLANTING; TYP.

D4 L501 PLANT BED EDGE TO LAWN CONDITION; TYP.

CONCRETE CURB TO LAWN EDGE; TYP.

Impervious surface removed

Sculpture pier shifts southward

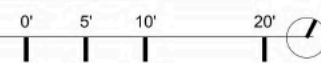
**PLANTING NOTES**

1. EXISTING UTILITIES SHOWN ARE APPROXIMATE AND SHALL BE VERIFIED IN THE FIELD PRIOR TO BEGINNING WORK. IDENTIFY LOCATION OF EXISTING UTILITIES PRIOR TO BEGINNING CONSTRUCTION. THE CONTRACTOR SHALL EXERCISE CAUTION WHEN WORKING AROUND EXISTING UTILITIES TO REMAIN.
2. PLANT LIST IS PROVIDED FOR CONVENIENCE ONLY. IN THE CASE OF DISCREPANCIES BETWEEN THE PLAN AND PLANT LIST QUANTITIES, THE PLAN SHALL TAKE PRECEDENCE.
3. AFTER THE SITE IS STABILIZED AND FREE OF SEDIMENTATION, THE CONTRACTOR SHALL REMOVE ALL TEMPORARY EROSION CONTROL DEVICES, SILT, RIP RAP AND TEMPORARY STONE STAGING AREAS FOR REPLACEMENT WITH PLANTING SOIL. PROVIDE PLANTING ACCORDING TO THE LANDSCAPE PLAN.
4. TEMPORARY EROSION CONTROL SEED MUST BE FULLY REMOVED PRIOR TO PREPARATION OF PERMANENT SEED, SOD OR LANDSCAPE BEDS.
5. UNLESS OTHERWISE NOTED IN THE PLANT LIST, OWNER SHALL OBTAIN AND INSTALL ONLY PLANT MATERIAL THAT IS GROWN ON ITS OWN ROOT - GRAFTED OR BUDDED PLANT MATERIAL WILL BE REJECTED.
6. ALL TREES SHALL BE OBTAINED FROM THE NURSERY WITH EXPOSED ROOT CROWNS. B&B MATERIAL DELIVERED TO SITE WITH BURIED OR RECENTLY BURIED ROOT CROWNS WILL BE REJECTED.
7. OWNER WILL NOTIFY LANDSCAPE ARCHITECT OF PLANT SUBSTITUTIONS IN ANY MEASUREMENT OR SPECIES INDICATED. SEE SPECIFICATIONS FOR FULL NOTIFICATION REQUIREMENTS.
8. CONTRACTOR SHALL STAKE ALL PLANT LOCATIONS IN THE FIELD. OBTAIN APPROVAL FROM LARCH PRIOR TO STARTING PLANT INSTALLATIONS
8. DO NOT PLANT IN STORM WATER CONVEYANCE SWALES OR PROVIDE FINE GRADING THAT DISRUPTS FLOW OR CHANGES LONGITUDINAL SLOPES.
9. PLANT THE OUTER EDGES OF EACH PLANTING GROUP FOLLOWING THE BED OUTLINE ACCORDING TO THE PLAN. ONCE A SATISFACTORY MATCHED OUTER SHAPE IS OBTAINED, FILL THE CENTER OF EACH AREA WITH PLANTS ACCORDING TO THE PLAN AND SPACING NOTES.
10. THE PLANTING LAYOUT WITHIN PLANTING BEDS SHOULD BE SHIFTED TO MINIMIZE CONFLICTS WITH EXISTING TREE ROOTS AND OTHER STRUCTURES.
11. DISTURBED EARTH AREAS BEYOND PROJECT LIMITS THAT ARE DIRECTLY CAUSED BY CONTRACTOR MEANS AND METHODS SHALL BE RESTORED WITH FESCUE SOD UNLESS OTHERWISE NOTED.

**PLANTING LEGEND**

	PERENNIAL & SHRUB MIX - 18"-30" HT.
	EVERGREEN MASSING - 12"-18" HT. 75% GROUND COVER, 25% PERENNIALS & SHRUBS
	ORNAMENTAL GRASSES - 12"-24" HT.
	SOD (FESCUE)
	EVERGREEN TREE 8' X 4'

NOTE: REFER TO L181 FOR ESTIMATED QUANTITIES



14 ADDITIONAL TREES  
PROPOSED AT COUNTRY MUSIC  
PARK

