

MAP DATA TAKEN FROM AERIAL SURVEY OF KNOXVILLE AND KNOX COUNTY. THIS MAP IS INTENDED TO MEET NATIONAL MAP ACCURACY STANDARDS AT THE COMPILATION SCALE

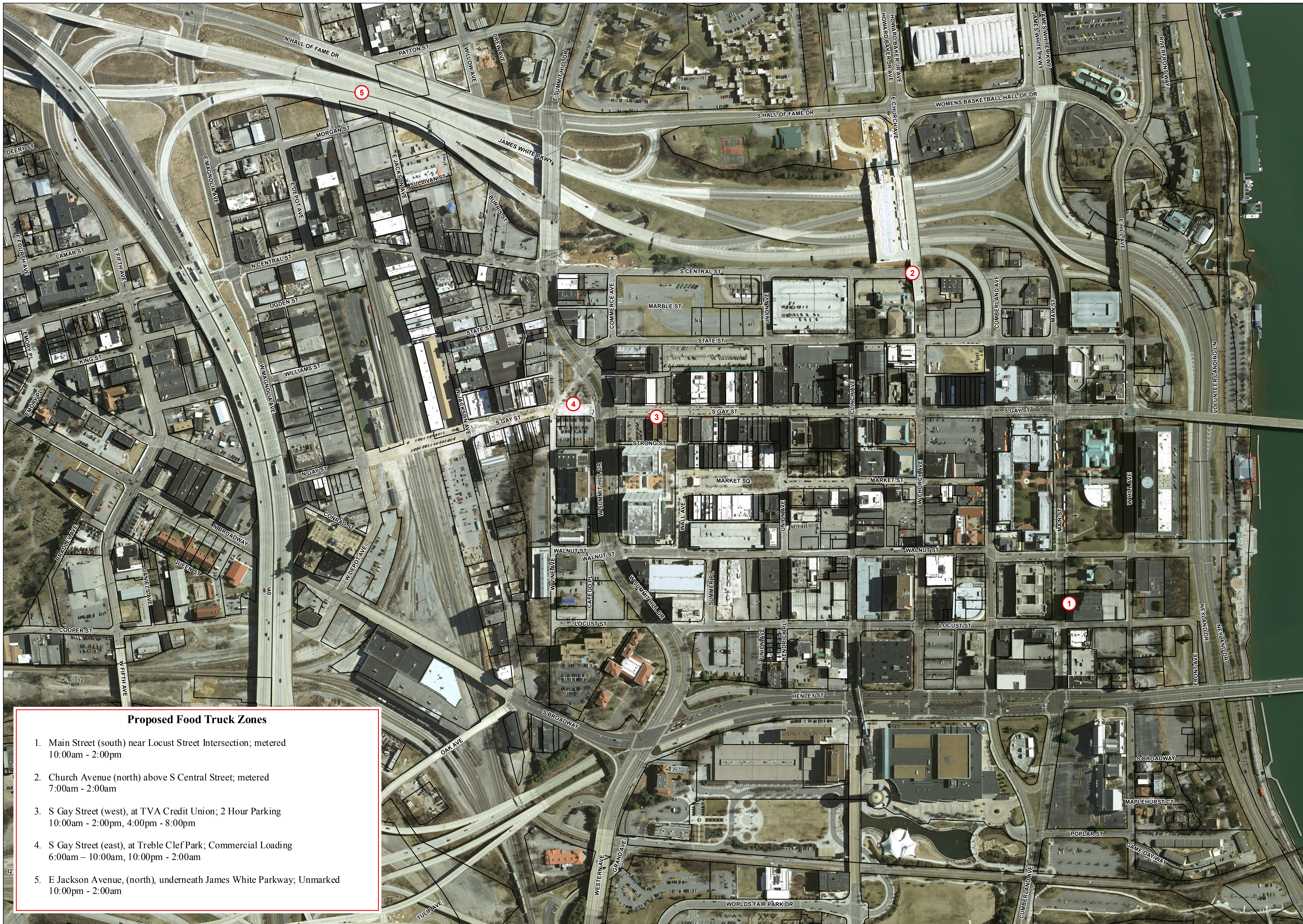
**DISCLAIMER**

This map product was prepared from a Geographic Information System (GIS) jointly established by the City of Knoxville, Knox County, and the Knoxville Utilities Board for their internal purposes only and was not designed or intended for general use by members of the public. The GIS Policy Board, its employees, agents and personnel, makes no representation or warranty as to its accuracy, and in particular, its accuracy as to labeling, dimensions, contours, property boundaries, or placement or location of any map features thereon. The GIS Policy Board, its employees, agents and personnel, MAKES NO WARRANTY OF MERCHANTABILITY OR WARRANTY FOR FITNESS OF USE FOR A PARTICULAR PURPOSE, EXPRESS OR IMPLIED, WITH RESPECT TO THIS MAP PRODUCT. Any user of this map product accepts the same AS IS, WITH ALL FAULTS, and assumes all responsibility for the use thereof, and further covenants and agrees to hold personnel, harmless from and against any damage, loss, or liability arising from any use of the map product.

Independent verification of all data contained on this map product should be obtained by any user of this map product. The GIS Policy Board, its employees, agents and personnel, disclaims, and shall not be held liable for, any and all damage, loss or liability, whether direct, indirect, or consequential which arises or may arise from this map product or the use thereof by any person or entity.

This map product is copyrighted © 2011 by the GIS Policy Board (GIS). Any further reproduction or publication of this product without the express written permission from GIS is prohibited.

Date	Tech.	Version



- Proposed Food Truck Zones**
1. Main Street (south) near Locust Street Intersection; metered 10:00am - 2:00pm
  2. Church Avenue (north) above S Central Street; metered 7:00am - 2:00am
  3. S Gay Street (west), at TVA Credit Union; 2 Hour Parking 10:00am - 2:00pm, 4:00pm - 8:00pm
  4. S Gay Street (east), at Treble Clef Park; Commercial Loading 6:00am - 10:00am, 10:00pm - 2:00am
  5. E Jackson Avenue, (north), underneath James White Parkway; Unmarked 10:00pm - 2:00am